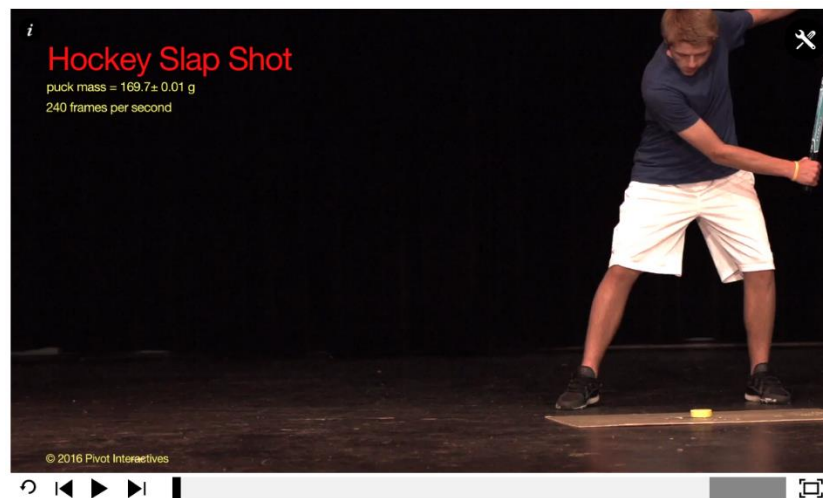


## Pivot Interactives Hockey Slap Shot

**Purpose:** To determine the force applied to a hockey puck during a slap shot.

Access the Pivot Interactives lab “Force and Motion During a Hockey Slap Shot”. If you scroll down to the video window you will see this:



Open the toolbox and use the stopwatch and ruler to answer these questions:

- 1) How long is the hockey stick in contact with (and therefore applying a force to) the puck?
- 2) What is the final velocity of the puck? What is its final momentum?
- 3) If the impulse applied to the puck by the hockey stick is equal to the change in the momentum of the puck, what is the average force applied by the stick on the puck?

Open a Word document. Use it to show your measurements and calculations as well as the answers to the above questions. Then submit it via Canvas.

